

# Station Road, West Byfleet

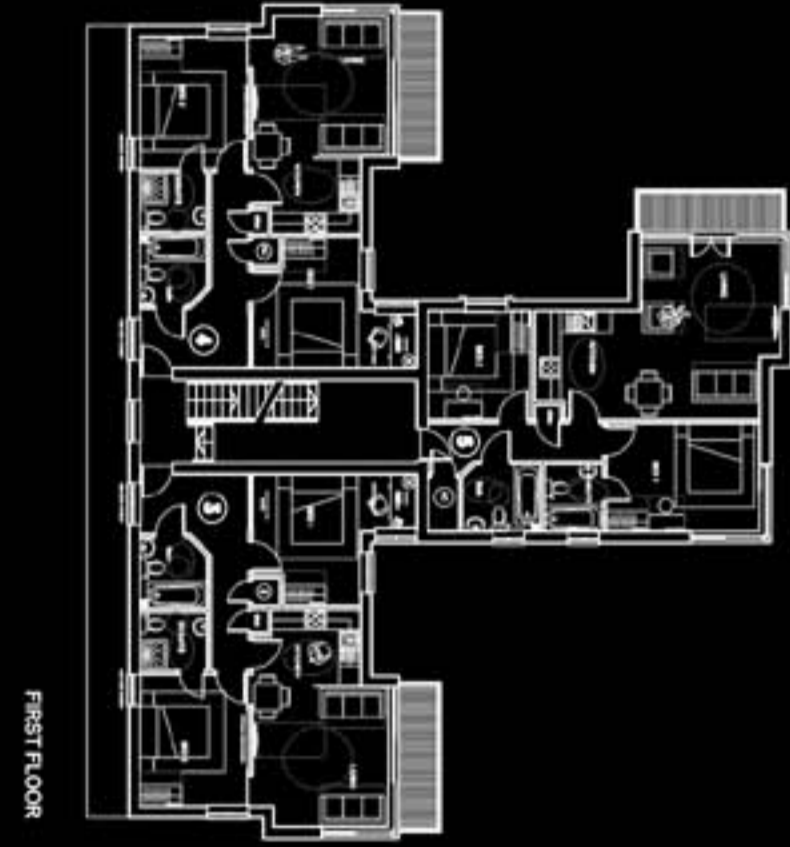
Client: Bridgewater Developments  
Location: West Byfleet, Surrey  
Status: Planning Permission Granted (October 2008)

Located close to the centre of West Byfleet, this 0.15ha site was granted planning permission in October 2008 for a new contemporary apartment building (comprising 6 no. 2 bed flats).

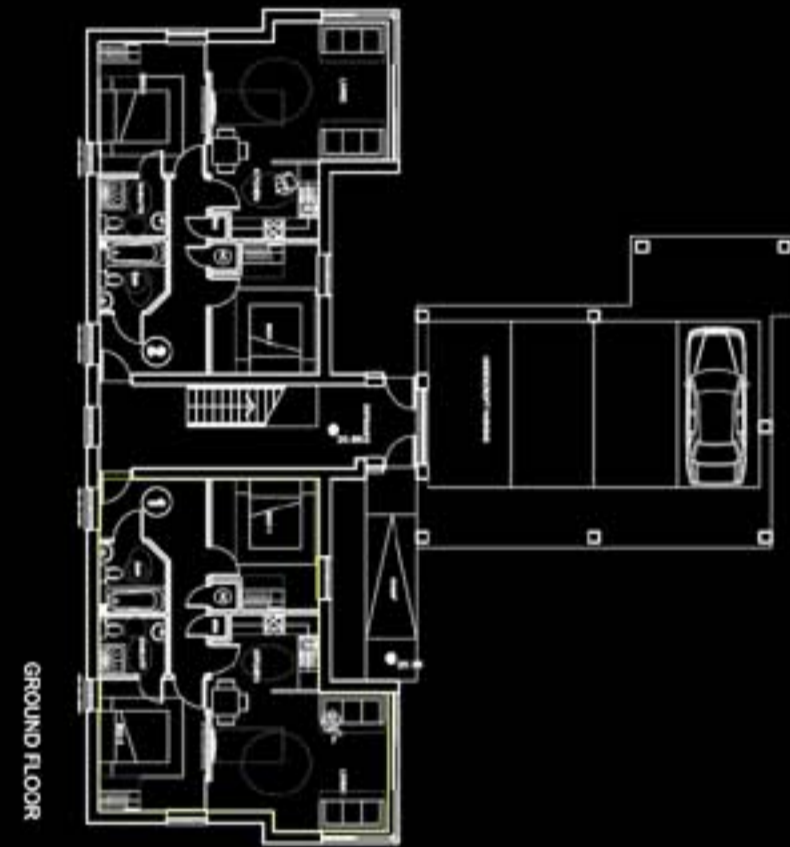
Modern and unique in design, the development incorporates a series of striking timber shingled curved roofs to ensure a sympathetic relationship with the neighbouring properties, whilst incorporating a contemporary palette of materials.



Second floor plan



First floor plan



Ground floor plan



North East Elevation



South East Elevation

